

## Rectangular Stainless Steel Weights System for Various Combinations



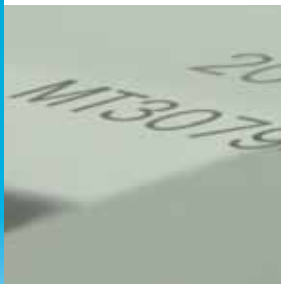
### Flexibility

The weights' rectangular shape allows them to be used in a wide variety of combinations. Their low center of gravity guarantees reliable measurement results in each setup.



### Smart Lifting System

Each weight is provided with a specially designed tool for safe and precise handling. The tool is removable for space-saving storage.



### Laser Markings

The high specification polished stainless steel surface is marked in accordance with OIML guidelines using the latest laser technology. Customer defined marking is also available.



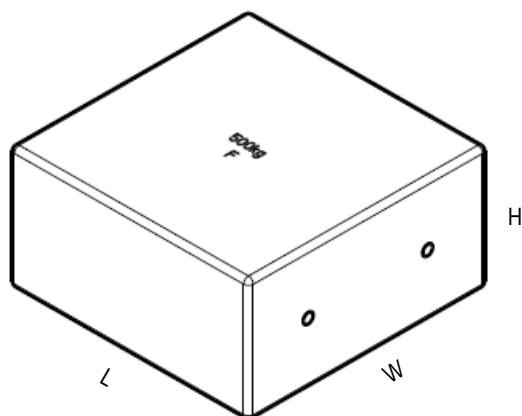
### Rectangular Stainless Steel Weights For Efficient Work

METTLER TOLEDO's heavy capacity rectangular weights are designed to ensure safe and efficient working practices, making them the ideal solution for repeated calibration procedures. The weights are manufactured in accordance with OIML-R111 standards for material, surface condition, density, and magnetism.

Traditional cylindrical weights with eye bolts on top cannot be stacked. METTLER TOLEDO's unique new rectangular design relocate the removable lifting mechanism to the side, making these weights the perfect choice for measurement standards laboratories and National Institutes.

Weights are available in OIML class F1 or F2 with nominal values from 100 kg to 1000 kg.

## Economical Testing with METTLER TOLEDO Weights



### Technical Specification

Tolerance	OIML cl. F <sub>1</sub> , F <sub>2</sub> (acc. to OIML R111-1:2004)
Material weight	Stainless Steel
Density $\rho$	7950 kg/m <sup>3</sup> $\pm$ 140 kg/m <sup>3</sup>
Susceptibility $\chi$	< 0.2
Polarization $\mu_0 M$	< 25 $\mu$ T
Surface	High gloss finish
Adjusting cavity	Yes
Scope of delivery	Handling device, pvc dust cover

### Stainless Steel Rectangular Weights F<sub>1</sub>

Order Number*	Nominal Value	MPE OIML cl. F <sub>1</sub> ( $\pm \delta m$ in mg)	Length (mm)	Width (mm)	Height (mm)
30037863	100 kg	$\pm$ 500 mg	500	500	52
30037864	200 kg	$\pm$ 1000 mg	500	500	104
30037865	500 kg	$\pm$ 2500 mg	500	500	255
30037866	1000 kg	$\pm$ 5000 mg	500	500	520

### Stainless Steel Rectangular Weights F<sub>2</sub>

Order Number*	Nominal Value	MPE OIML cl. F <sub>2</sub> ( $\pm \delta m$ in mg)	Length (mm)	Width (mm)	Height (mm)
30037867	100 kg	$\pm$ 1600 mg	500	500	52
30037868	200 kg	$\pm$ 3000 mg	500	500	104
30037869	500 kg	$\pm$ 8000 mg	500	500	255
30037871	1000 kg	$\pm$ 16000 mg	500	500	520

\*Please contact your local dealer for order numbers incl. calibration certificates

### Accessories

Order Number	Description	Specification
72001	Leather gloves	Size L
11123098	Nylon gloves	Size XL

For quotes or technical information regarding weights please use this email address:  
weights@mt.com



#### Mettler-Toledo AG

Laboratory & Weighing Technologies  
CH-8606 Greifensee  
Tel. +41 44 944 2211  
Fax +41 44 944 3170

Subject to technical changes  
© 03/2013 Mettler-Toledo AG  
Printed in Switzerland 30083746  
Global MarCom Switzerland

[www.mt.com/industrial-weights](http://www.mt.com/industrial-weights)

For more information

